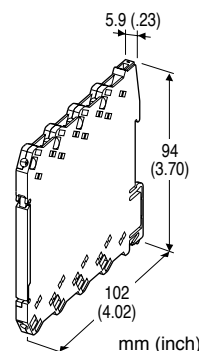
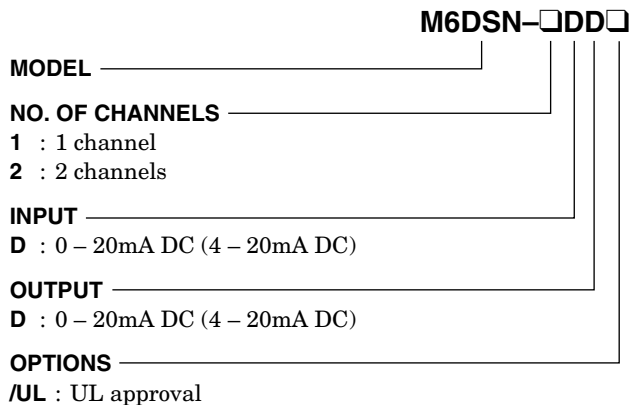


Euro Terminal Ultra-Slim Signal Conditioners *M6D Series*

INPUT LOOP POWERED ISOLATOR

MODEL **M6DSN**

MODEL & SUFFIX CODE SELECTION



Functions & Features

- 5.9-mm wide ultra-slim design
- Low profile allows the M6D module mounted in a 120-mm deep panel
- Loop-powered design eliminates output loop power supply
- Two isolators housed in one enclosure
- High-density mounting
- UL approval

ORDERING INFORMATION

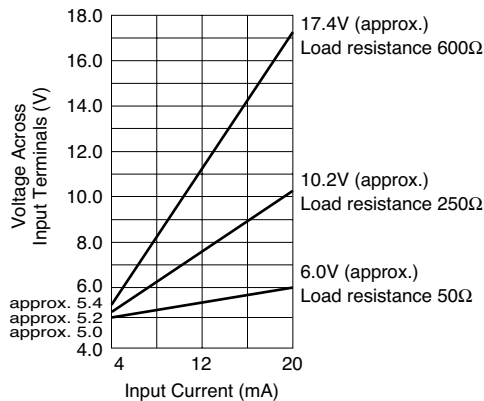
Specify code number. (e.g. M6DSN-2DD/UL)

GENERAL SPECIFICATIONS

Connection: Euro terminal (torque 0.3 N·m)
Applicable wire size: 0.2 to 2.5 mm²
Housing material: Flame-resistant resin (black)
Isolation: Input to output, between channels
Span adjustments: ±0.5% (front)

INPUT & OUTPUT

Equivalent input impedance: 250Ω plus load resistance with 20mA input
Operational range: 0.05 – 40mA DC (Accuracy is assured within 0.05 – 22mA)
Minimum operating current: 0.05mA
Load resistance: 0 – 600Ω



INSTALLATION

Operating temperature: -20 to +55°C (-4 to +131°F)
Operating humidity: 30 to 90% RH (non-condensing)
Mounting: DIN rail
Dimensions: W5.9×H94×D102 mm (0.23”×3.70”×4.02”)
 See General Spec. Sheet Figure A-1.
Weight: 60 g (2.1 oz)
Terminal assignment: See General Spec. Sheet Figure A-1.

PERFORMANCE in percentage of span

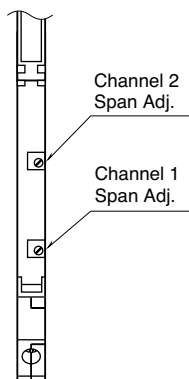
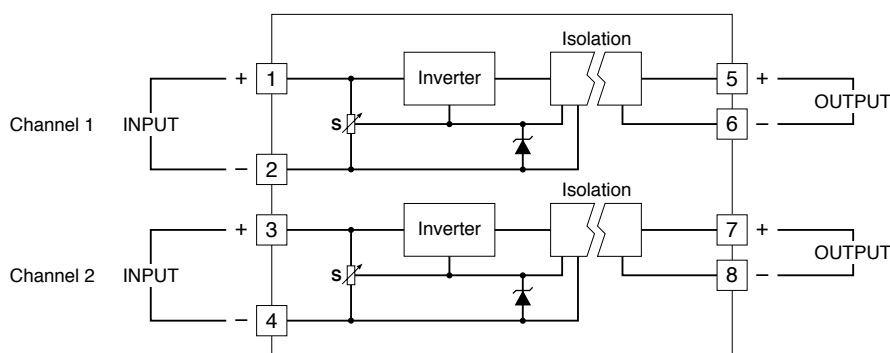
Accuracy: ±0.1%
Temp. coefficient: ±0.015%/°C (±0.008%/°F)
Response time: Approx. 20 milliseconds (0 – 90%)
Load effect*: 0.004%/Ω (0 – 600Ω)
 *The unit is calibrated with 250Ω load at the factory.
Insulation resistance: ≥100MΩ with 500V DC
Dielectric strength: 1500V AC @1 minute (input to output)
 2000V AC @1 minute (between channels)
 2000V AC @1 minute (input or output to ground)

STANDARDS & APPROVALS

CE conformity: EMC Directive (2004/108/EC)
 EN 61000-6-4 (EMI)
 EN 61000-6-2 (EMS)
Approval: UL/C-UL nonincendive Class I, Division 2, Groups A, B, C, and D hazardous locations (ANSI/ISA-12.12.01, CAN/CSA-C22.2 No.213)
 UL/C-UL general safety requirements (UL 61010-1, CAN/CSA-C22.2 No.61010-1)

FRONT VIEW

(With the cover open)

**SCHEMATIC CIRCUITRY & CONNECTION DIAGRAM****По вопросам продаж и поддержки обращайтесь:**

Архангельск (8182)63-90-72
 Астана +7(7172)727-132
 Белгород (4722)40-23-64
 Брянск (4832)59-03-52
 Владивосток (423)249-28-31
 Волгоград (844)278-03-48
 Вологда (8172)26-41-59
 Воронеж (473)204-51-73
 Екатеринбург (343)384-55-89
 Иваново (4932)77-34-06
 Ижевск (3412)26-03-58
 Казань (843)206-01-48

Калининград (4012)72-03-81
 Калуга (4842)92-23-67
 Кемерово (3842)65-04-62
 Киров (8332)68-02-04
 Краснодар (861)203-40-90
 Красноярск (391)204-63-61
 Курск (4712)77-13-04
 Липецк (4742)52-20-81
 Магнитогорск (3519)55-03-13
 Москва (495)268-04-70
 Мурманск (8152)59-64-93
 Набережные Челны (8552)20-53-41

Нижний Новгород (831)429-08-12
 Новокузнецк (3843)20-46-81
 Новосибирск (383)227-86-73
 Орел (4862)44-53-42
 Оренбург (3532)37-68-04
 Пенза (8412)22-31-16
 Пермь (342)205-81-47
 Ростов-на-Дону (863)308-18-15
 Рязань (4912)46-61-64
 Самара (846)206-03-16
 Санкт-Петербург (812)309-46-40
 Саратов (845)249-38-78

Смоленск (4812)29-41-54
 Сочи (862)225-72-31
 Ставрополь (8652)20-65-13
 Тверь (4822)63-31-35
 Томск (3822)98-41-53
 Тула (4872)74-02-29
 Тюмень (3452)66-21-18
 Ульяновск (8422)24-23-59
 Уфа (347)229-48-12
 Челябинск (351)202-03-61
 Череповец (8202)49-02-64
 Ярославль (4852)69-52-93

сайт: www.fuji.nt-rt.ru || эл. почта: fxu@nt-rt.ru